

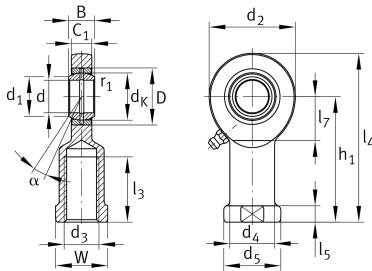
GIR20-DO

Rod end

Schaeffler ID:
0066354660000

Rod end with internal thread, right hand thread, requiring maintenance, sliding contact surface: steel/steel, DIN ISO 12240-4, dimension series E, type F, open design

Technical information



Main Dimensions & Performance Data

d	20 mm	Bore diameter bearing
D	35 mm	Outside diameter bearing
B	16 mm	Width inner ring
C_r	29,600 N	Basic dynamic load rating, radial
C_{0r}	75,600 N	Basic static load rating, radial
G_r	0,03 - 0,082 mm	Radial Clearance
	0.343 kg	Weight

Dimensions

d_K	29 mm	Ball diameter
d_1	24.1 mm	Outer flange diameter inner ring
d_2	53 mm	Outer eye diameter
d_3	M20x1,5	Thread size
d_4	27.5 mm	Shank diameter
h_1	77 mm	Shank Length Internal thread head
α	9 °	Tilt angle
l_3	40 mm	Thread length Internal thread
l_4	103.5 mm	Total length internal thread head
l_5	10 mm	length rod end shank
l_7	27 mm	Distance drilling with/shaft start
d_5	35 mm	Shank diameter, large
C_1	13 mm	Width of the rod end
r_{1smin}	0.3 mm	Edge Spacing
W	32 mm	Width Across Flat
d_{OT}	0 mm	Bore diameter bearing, upper tolerance
d_{UT}	-0.01 mm	Bore diameter bearing, lower tolerance
B_{OT}	0 mm	Width inner ring, upper tolerance
B_{UT}	-0.12 mm	Width inner ring, lower tolerance

Temperature range

T _{min}	-60 °C	Operating temperature min.
T _{max}	200 °C	Operating temperature max.